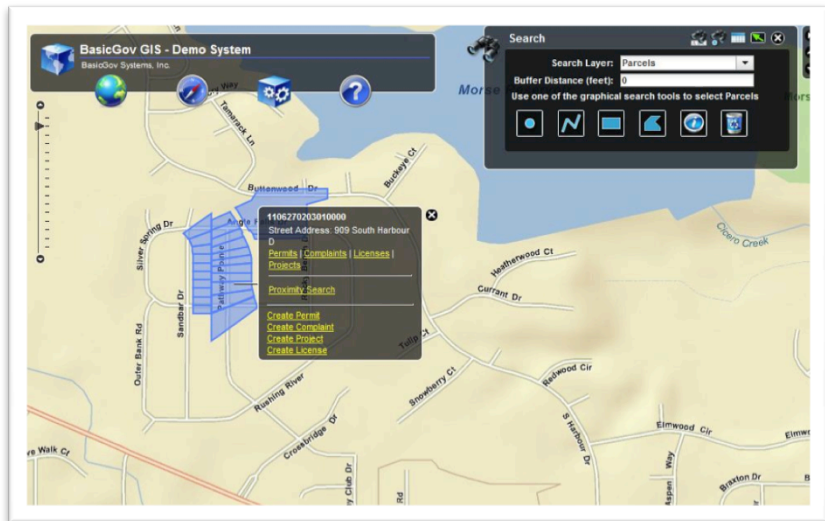


**Overview** - The BasicGov ESRI GIS Connector integrates your existing ESRI GIS Server (V9.2+) spatial data with BasicGov. It adds visual analysis capabilities to BasicGov. BasicGov GIS reduces complexity by providing your staff with map based tools to manage all land use, zoning, and relevant information related to a parcel, permit, inspection, plan, or code violation.



### Benefits of ESRI Integration for BasicGov Customers

- ◆ BasicGov GIS Connector organizes land use and community development information, such as parcels and zoning, as layers over existing ESRI and Google Earth maps.
- ◆ Graphical representation of government information assists with complex land use analysis, solutions and decisions.
- ◆ GIS Integration allows government staff to easily share information and planning concepts visually across departments.
- ◆ Visually locating key activity or records reduces time for government staff to organize multi-projects and related tasks.
- ◆ BasicGov ESRI GIS Connector and all BasicGov Modules can be accessed in your office or remotely with a computer and internet connection.

### Benefits of Salesforce.com and Force.com Cloud Computing Platform

1. Unparalleled system scalability and security
2. SAS 70 Type II certification
3. Multiple geographically dispersed data centers
4. Multi-level backup strategy for disaster response and recovery
5. BasicGov is 100% focused on feature development, not infrastructure
6. Managed by the #1 SaaS based workflow automation company
7. Reduce your carbon footprint

### Key Features

- View land use information on map
- View GIS info from within BasicGov
- Create any activity (inspection, permit, etc) directly from map
- Select parcels adjacent or within buffer distance
- Add adjacent parcels owners to notify
- Attach multiple parcels
- Select layers by point/line/shape
- Display parcel related BasicGov activity
- Query both preset and custom data sets
- Add additional parcels to existing activities (permits, complaints, etc)
- View open activities within proximity
- Text search both layer attributes and BasicGov activities
- Geocode activities via address/parcel
- Use existing GIS services without republishing
- Identify any layer characteristics

### Budgeting is easy with BasicGov

1. No capital costs
2. Free upgrades
3. No maintenance and support fees
4. 99.9%+ uptime history
5. Reduced training time
6. Fast productivity ROI

### Why choose BasicGov

1. Fast implementation
2. Integrated suite of modules
3. Modules are easy to learn and use
4. No technical expertise required
5. Superior customer service
6. 99.9%+ uptime history