

# Esri® GIS Connector



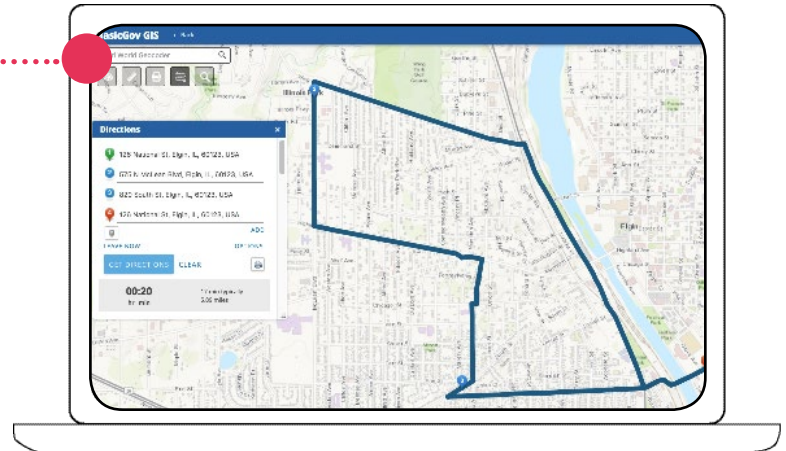
## Key Features and Capabilities

### GIS Map Viewer

- Easily zoom or pan to map location via address search or “use current location”
- Select GIS features - such as parcels or assets - by shape, by text, or from the results of the info panel display
- Easily change graphical views (GIS layers) and switch between available basemaps
- Optimize inspection directions with easy-to-use routing feature
- Use basic sketching and redlining capabilities to draw on or markup a section of your map

### GIS Sync

- Pull or push data from or to a REST-enabled Esri® GIS Server into any Salesforce® object
- Pull data relates parent-child records
- Intelligent synch jobs determine whether to update or insert new data based on if the shared primary key is filled in either system
- Set actual values from either system or set hardcoded values or transform formulas
- Filter records from either system using GIS database SQL syntax (when pulling GIS records), or Salesforce® SOQL syntax (when pushing Salesforce® records)

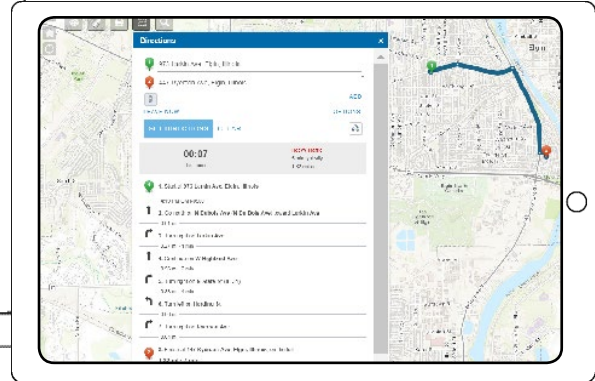
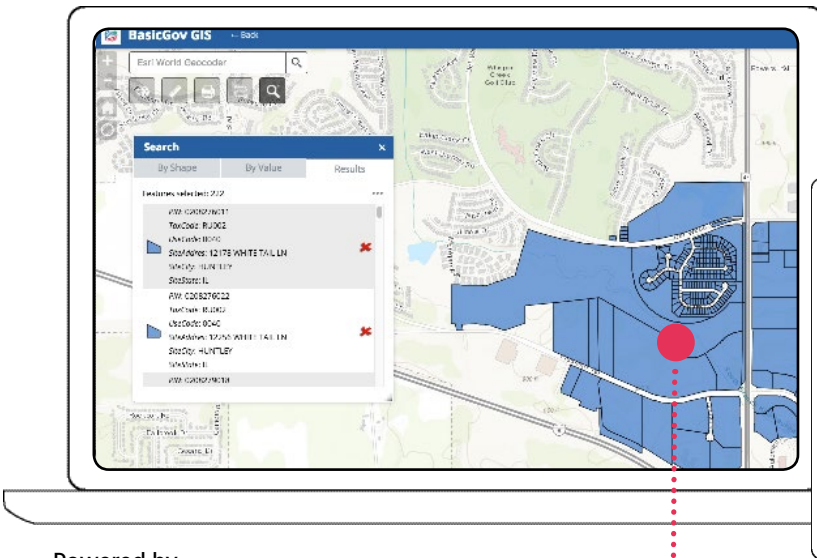


*Plot daily inspections on a map with optimized directions*

No permitting, licensing, or inspection solution is complete without location-aware data. To better serve that need, BasicGov has teamed up with GIS industry leader - Esri® - to provide a two-way GIS sync solution that connects your existing Esri® platform to our platform provider - Salesforce®.

The BasicGov GIS Connector is made up of two components: the GIS Sync and GIS Map Viewer. GIS Sync integrates your existing Esri®-GIS Server spatial data with any Salesforce® Object, while GISMap Viewer adds visual mapping capabilities to any Salesforce® Object.

Our tool reduces complexity by providing staff with map and data transformation-based tools to manage all land use, zoning, and related GIS attributes (including latitude, longitude) of an asset, parcel, permit, inspection, plan, and code violation case. These attribute values can drive downstream workflow from the equivalent fields on any Salesforce® object.



Powered by



Parcel search and routing made easy

### ✓ BasicGov Benefits

- Increase efficiency by pin-pointing locations for any type of “in field” activity using the X-Y GIS coordinates
- Maximize efforts into concentrated areas and complete more inspections in less time by planning and scheduling work geographically
- Increase transparency for citizens to see what is going on in their neighbourhood
- Reduce/eliminate double-data-entry with direct data access in the field instead of staff needing to return to the office for later capture
- More timely data - Data will be created in the system in a timelier fashion, due to staff’s ability to record and update records from the field

### About BasicGov

#### Empowering Government to Efficiently Serve

At BasicGov, we focus on making state and local government interactions with citizens and businesses more efficient around regulatory and compliance-based processes. Our purpose creates results for agencies and individuals who seek to improve the citizen experience.

Using BasicGov’s comprehensive cloud platform, government can automate and streamline operations in permitting, licensing, inspection, code enforcement and land management to cut costs, meet the ever-changing demand for citizen services, and evolve into a more open, transparent, and collaborative organization.

Our cause for efficiency is further enhanced by our choice to use the Force.com platform from Salesforce®. This cloud platform provides world-class security, performance, and flexibility.



### Salesforce® Platform Advantages

Secure, private, scalable and reliable

The Salesforce® service has been designed to provide customers with 100% trusted privacy with the highest levels of performance, reliability, and security.

Market leadership and continuous innovation

Salesforce® was named one of the World’s Most Innovative Companies by Forbes for the last seven years in a row. Salesforce® is #1 in Enterprise Cloud Computing and #1 in CRM according to IDC.

Ease of use

The Salesforce® Platform offers a core set of technologies that not only power the Salesforce® SaaS products like BasicGov, but will also allow our customers to build custom apps, connect data from any system, and manage it from anywhere.